



The 2020 Market:
Bluebirds & Black Swans




Presented by:
Jackie Cummings Koski
Partner, Cincinnati Model Investment Club (CinMIC)
BI National Board of Directors
www.betterinvesting.org/okitri




NON-PROFIT VOLUNTEER BASED MEMBER DRIVEN


1


Which one sums up your 2020?



Bluebirds 

A symbol of good luck. An unexpected opportunity that drops into your lap without much effort.



Black Swan 

An event or occurrence that deviates beyond what is normally expected of a situation and is extremely difficult to predict.

NON-PROFIT VOLUNTEER BASED MEMBER DRIVEN 2

2

The Many Competing Themes of 2020




- ✓ COVID Shutdown vs. K-shaped Recovery
- ✓ Stock Market highs vs. Unemployment highs
- ✓ Stay at Home vs. Re-opening
- ✓ Housing shortage vs. Seller's Market
- ✓ Record Sales vs. Business Shutdown
- ✓ New investors vs. new investments

NON-PROFIT VOLUNTEER BASED MEMBER DRIVEN 3

3

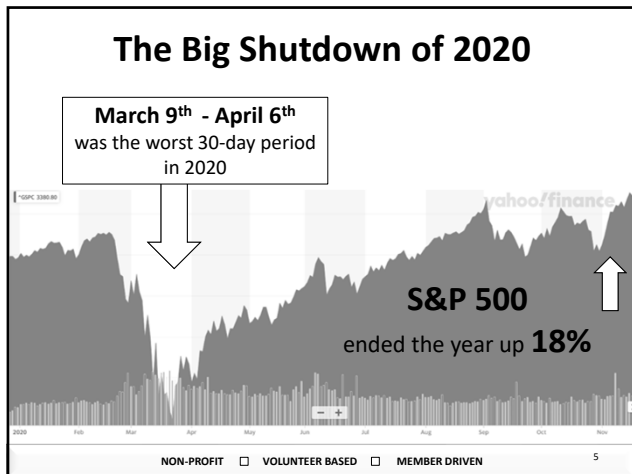
DISCLAIMER

BetterInvesting is non-profit, volunteer based and member driven. The information contained in this presentation is for education and information purposes only, and does not constitute professional advice. The information provided is subjective and you should always do your own research before making decisions. While reasonable efforts are made to include accurate and up-to-date information, the creator makes no warranties or representations of any kind concerning the accuracy, timeliness or suitability of the information provided for any purpose. Validity of the content is not guaranteed and you are strongly urged to consult a professional or other authority in the appropriate field before acting on any of the content.

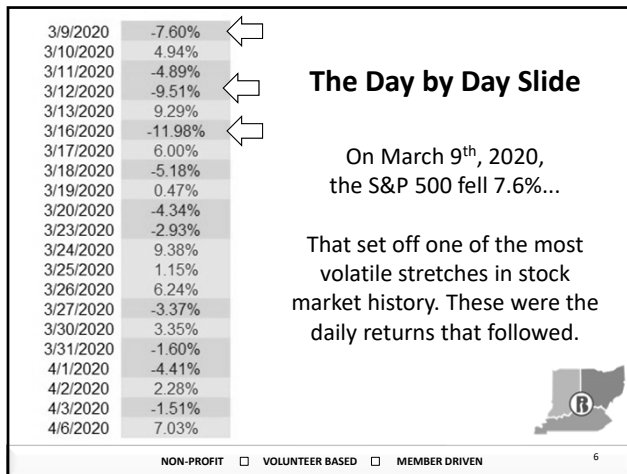


NON-PROFIT VOLUNTEER BASED MEMBER DRIVEN

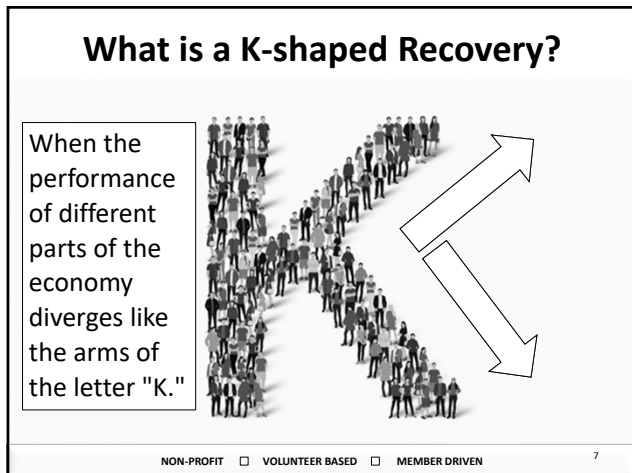
4



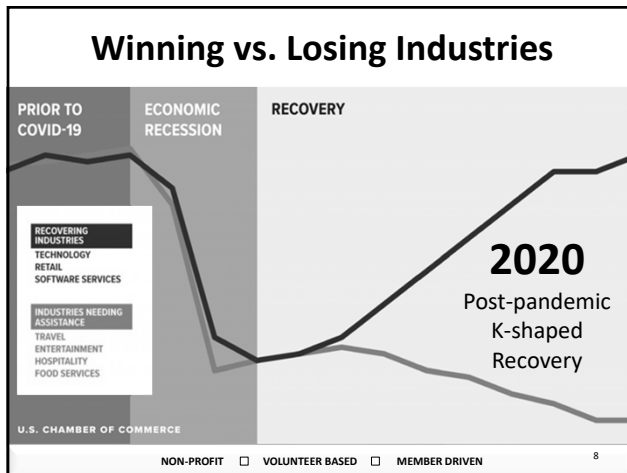
5



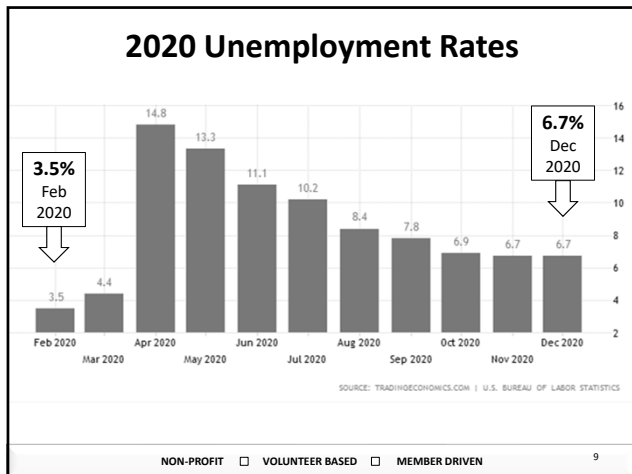
6



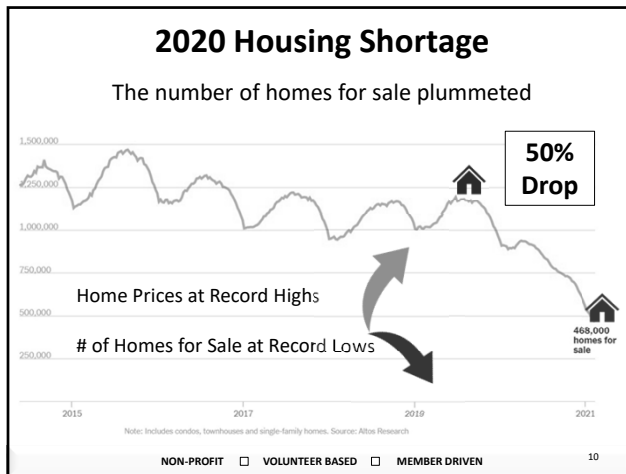
7



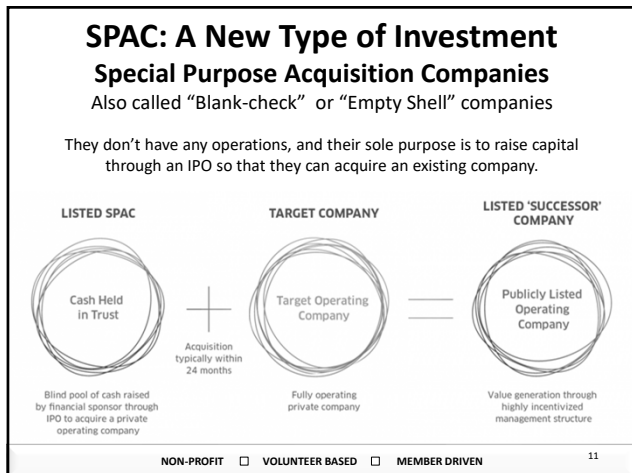
8



9



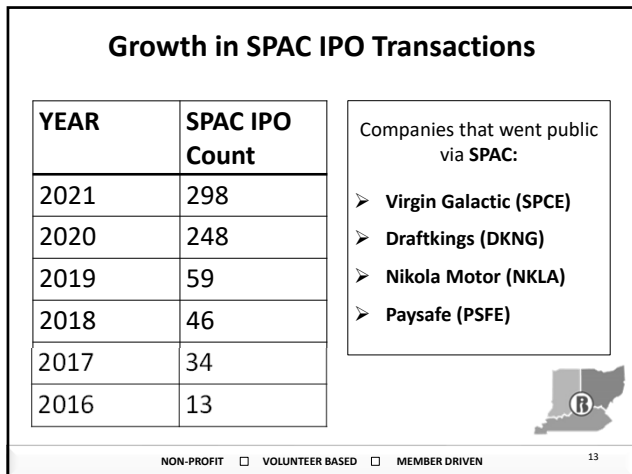
10



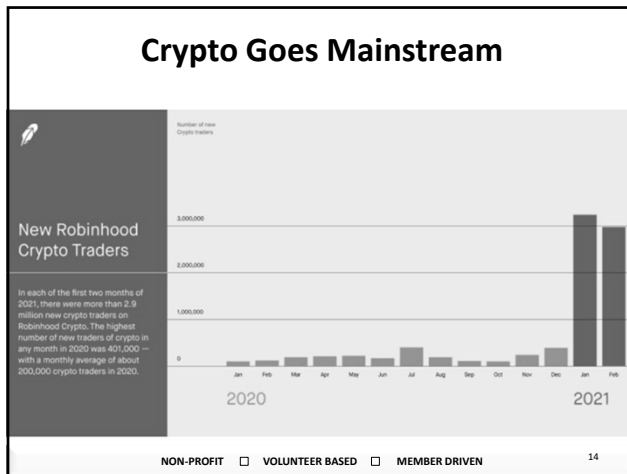
11

- ### 3 Ways a Company can go Public
1. Traditional IPO: Do a roadshow and raise funds through investors
 2. Direct Listing : List on the stock exchange without raising funds
 3. SPAC: merge with a blank check, public company
-
- NON-PROFIT VOLUNTEER BASED MEMBER DRIVEN 12

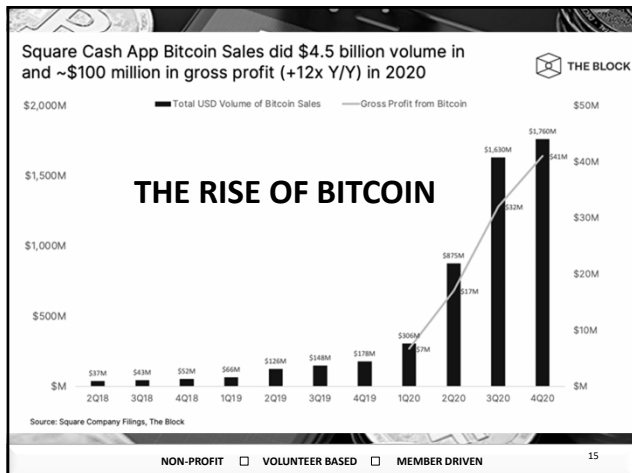
12



13



14



15

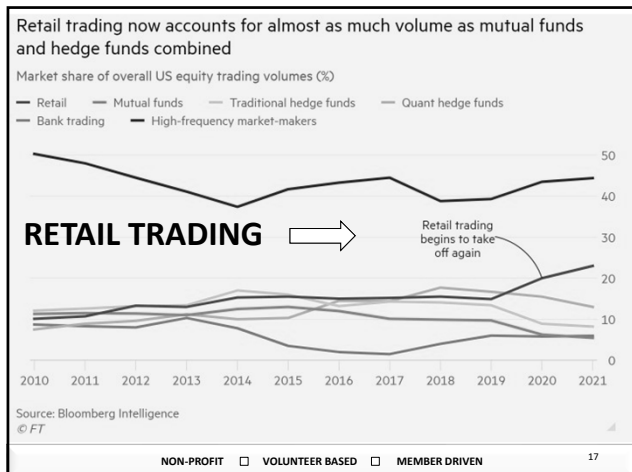
Coinbase

The Largest Cryptocurrency Exchange
Just went public via Direct Listing in April 2021

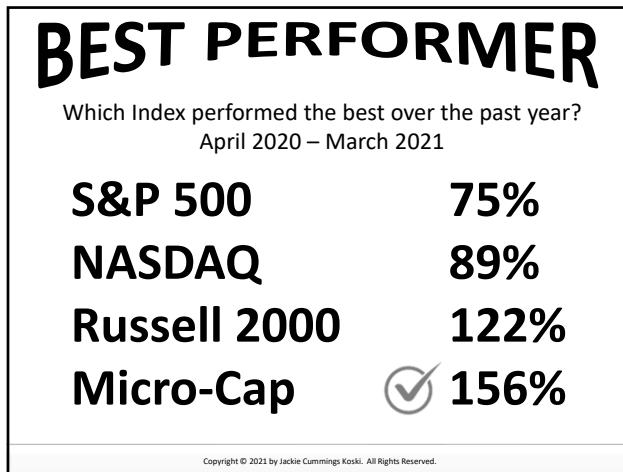
	Year Ended December 31, 2020		% Change
	2020	2019	
Verified Users	43	32	34.4%
Monthly Transacting Users	2.8	1.0	180%
Assets on Platform	\$ 90,307	\$ 16,969	432%
Trading Volume	\$ 193,097	\$ 79,906	142%
Net income (loss)	\$ 322	\$ (30)	
Adjusted EBITDA(1)	\$ 527	\$ 24	2,096%

NON-PROFIT VOLUNTEER BASED MEMBER DRIVEN 16

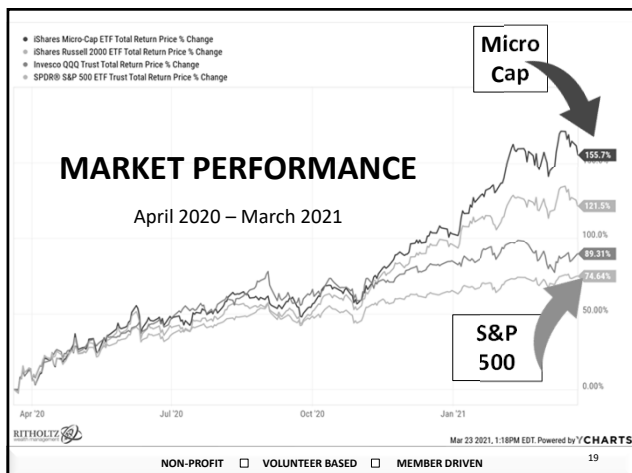
16



17



18



19

What was the Best Performing Asset Class in 2020?

2011	2012	2013	2014	2015	2016	2017	2018	2019	2020	10 Years
TIPS 13.3%	EM 19.1%	Small Cap 41.0%	REITs 30.4%	REITs 2.4%	Small Cap 26.6%	EM 37.3%	Cash 1.7%	Large Cap 31.2%	Large Cap 18.3%	Large Cap 13.8%
REITs 6.9%	Int'l Stocks 18.8%	Mid Cap 35.2%	Large Cap 13.5%	Large Cap 1.9%	Mid Cap 20.9%	Int'l Stocks 25.1%	Bonds 0.1%	REITs 28.9%	EM 17.0%	Small Cap 11.5%
Bonds 7.7%	REITs 17.6%	Large Cap 32.3%	Mid Cap 9.4%	Bonds 0.5%	Comdty 12.9%	Large Cap 21.7%	TIPS -1.4%	Mid Cap 25.8%	Mid Cap 13.5%	Mid Cap 11.2%
Large Cap 1.9%	Large Cap 16.0%	Int'l Stocks 21.4%	Bonds 6.0%	Cash -0.1%	Large Cap 12.0%	Mid Cap 15.9%	Large Cap -4.6%	Small Cap 22.6%	Small Cap 11.4%	REITs 8.7%
Small Cap 1.1%	Small Cap 15.7%	EW 10.7%	Small Cap 5.9%	Int'l Stocks -1.0%	EM 10.9%	Small Cap 13.1%	REITs -6.0%	Int'l Stocks 22.0%	TIPS 10.8%	EW 6.7%
Cash 0.0%	Mid Cap 15.2%	REITs 2.3%	EW 4.8%	TIPS -1.8%	EW 10.0%	EW 12.6%	EW -7.2%	EM 18.2%	EW 7.8%	Int'l Stocks 5.4%
EW -4.4%	EW 11.0%	Cash -0.1%	TIPS 3.6%	Small Cap 1.6%	REITs 8.0%	REITs 4.9%	Small Cap -8.0%	EW 17.5%	Int'l Stocks 7.0%	Bonds 3.7%
Mid Cap -1.5%	TIPS 6.4%	Bonds -2.0%	Cash -0.1%	Mid Cap -2.5%	TIPS 4.7%	Bonds 3.6%	Mid Cap -11.3%	Bonds 8.5%	Bonds 7.5%	TIPS 3.7%
Int'l Stocks -12.3%	Bonds 3.8%	EM -3.7%	EM -3.9%	EW -4.7%	Bonds 2.4%	TIPS 2.9%	Int'l Stocks -13.1%	TIPS 8.4%	Cash 0.4%	EM 2.9%
Comdty -14.0%	Cash 0.0%	TIPS -8.5%	Int'l Stocks -6.2%	EM -16.2%	Int'l Stocks 0.7%	Comdty 1.4%	Int'l Stocks -13.8%	Comdty 7.6%	Comdty 4.1%	Cash 0.5%
EM -18.8%	Comdty -2.1%	Comdty -11.1%	Comdty -18.6%	Comdty -28.2%	Cash 0.1%	Cash 0.7%	EM -15.3%	Cash 2.0%	REITs -4.6%	Comdty -7.8%


Funds: EEM, VNQ, MDY, SLY, SPY, EFA, TIP, AGG, DJP, BIL

NON-PROFIT VOLUNTEER BASED MEMBER DRIVEN 20

20

BEST PERFORMER


Which was the Best Performing Stock in the S&P 500 for 2020

ETSY	302%
NVDA	122%
PYPL	117%
TSLA	 743%

Copyright © 2021 by Jackie Cummings Koski. All Rights Reserved.

21

2020 S&P 500 Record Returns

5 Best Performing:	5 Worst Performing:
<input type="checkbox"/> Tesla (TSLA)  743%	<input type="checkbox"/> Marathon Oil (MRO) -50%
<input type="checkbox"/> Etsy (ETSY) 302%	<input type="checkbox"/> Technip FMC (FTI) -55%
<input type="checkbox"/> NVIDIA (NVDA)  122%	<input type="checkbox"/> Occidental (OXY) -57%
<input type="checkbox"/> PayPal (PYPL)  117%	<input type="checkbox"/> Norwegian (NCLH) -57%
<input type="checkbox"/> L Brands (LB) 108%	<input type="checkbox"/> Carnival (CCL) -57%

 **BI Top 100**
 Every year the editors of BetterInvesting Magazine compile the Top 100, a list reflecting the most widely held stocks among BI stock investment club members nationwide.




NON-PROFIT **VOLUNTEER BASED** **MEMBER DRIVEN**

22

Additional Resources for COVID-19 And Your Finances

“Investing in Turbulent Times”
 Presented by Doug Gerlach- March 2020:
 Direct Link: <https://bit.ly/2U4bkhP>

Protecting your finances during the Coronavirus Pandemic:
www.consumerfinance.gov/coronavirus/



NON-PROFIT **VOLUNTEER BASED** **MEMBER DRIVEN** 23

23

Learn more about BetterInvesting OKI Chapter

www.BetterInvesting.org/okitri

 **Cincinnati Model Investment Club (CinMIC)**
 Meets at West Chester Library and online
 3rd Saturday of each month, 9:45am-11:45am
Meetings are free and open to the public (online and in person)

 **Dayton Model Investment Club (DayMIC)**
 Meets at Beavercreek Fire House and online
 2nd Tuesday of each month, 7pm-9pm
Meetings are free and open to the public (online and in person)



NON-PROFIT **VOLUNTEER BASED** **MEMBER DRIVEN** 24

24

QUESTIONS? COMMENTS?

Share **BetterInvesting** materials
with your family and friends!

 **Sample Our Resources**
Come On In

BetterInvesting.org/InvestBetter

Support BetterInvesting
When you shop at smile.amazon.com,
Amazon Donates 5% to Causes That

All Contributions Support BetterInvesting Member Programs

*Keep track of what's going on in
your OKI Tri-State Chapter:*
www.betterinvesting.org/okitri



NON-PROFIT VOLUNTEER BASED MEMBER DRIVEN

25